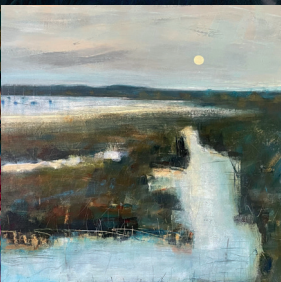




Gala Fine Art Bristol & ArtDog London present

Near



**A group exhibition
of fourteen
contemporary
artists from
Bristol, Cornwall,
London, Norfolk,
Suffolk and Spain**



**Tuesday 2 to Sunday
7 August 2022**

All welcome, free entry!

Tuesday | 11am to 8pm
(drinks served from 6pm)
Wednesday to Saturday |
11am to 7pm
Sunday | 11am to 4pm



**BALLROOM
ARTS**
152A HIGH STREET ALDBURGH SUFFOLK IP15 5AQ
WWW.BALLROOMARTS.ORG

artdog

Gala
FINE ART

FISHERS
THE SPIRIT OF THE COAST

Gala Fine Art Bristol and ArtDog London are heading to the Suffolk coast this summer to exhibit work by fourteen of their gallery artists at Ballroom Arts in Aldeburgh. *Near & Far* will showcase paintings by leading contemporary painters from Bristol, Cornwall, London, Norfolk, Suffolk and Spain from 2 to 7 August 2022.

Gala Fine Art is presenting paintings by Ella Carty, Serena Curmi, Tom Hughes, Cordelia Hutchison, Lucinda Metcalfe and Dan Parry-Jones, while ArtDog is exhibiting work by Ruth Bunnewell, Sophie Capron, Louise Craigie, Kate Felton Hall, Lisa Henshall, Sara Johnson, Becky Munting and Claudia de Vilafames.

Just as the artists are from near and far, so the subject matter of the paintings will take the viewer on a journey, from semi-abstract interiors and photorealist still lifes to woods and forests, swimming pools with sunlight reflections, holiday scenes with LA vibes, brooding mountains, abstracted landscapes, beach huts at sunrise and vibrant wildlife, via colourful abstract works inspired by nature or made using reclaimed materials. All the work will be for sale, priced between £195 and £3,600.

Open Tuesday 2 to Sunday 7 August 2022

Tuesday | 11am to 8pm

(drinks served 6 to 8pm, courtesy of Fishers Gin)

Wednesday to Saturday | 11am to 7pm

Sunday | 11am to 4pm

Free 2-hour parking on Aldeburgh High Street

artdoglondon.co.uk | galafineart.uk